



# MIRAGE

W H I T S U N D A Y S







# Introduction



# MIRAGE

W H I T S U N D A Y S

PAGE	PAGE	PAGE	PAGE	PAGE	PAGE	PAGE	PAGE	PAGE
3	4	5	6	7	14	22	25	

About Us	Location	Resort Description	Room Type	Room Facility	Resort Facility	Resort Service	Reservation
----------	----------	--------------------	-----------	---------------	-----------------	----------------	-------------





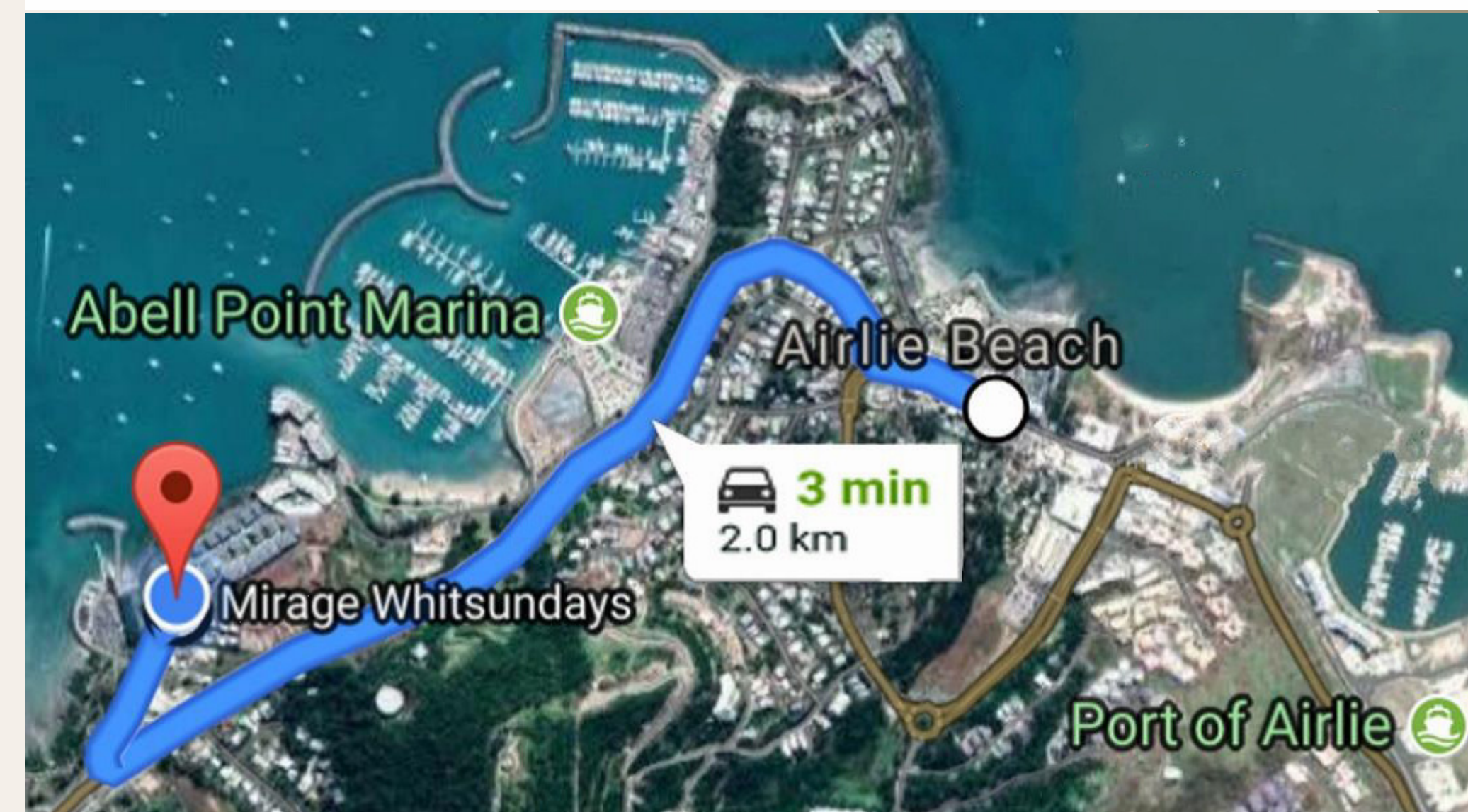
## *About Us*

---

Mirage Whitsundays is located in the heart of Whitsundays in Tropical **North Queensland**. We provide self-contained **apartments, villas and penthouses** all endowed with epicurean kitchens, indulgent bathrooms and spacious terraces with breathtaking island-dotted ocean views. With its northerly aspect, Whitsundays enjoys absolute water frontage.



- Mirage Whitsundays is nestled Airlie Beach of Whitsundays, connect with mainland , just a **30 minute drive from Whitsunday Coast Airport** in Proserpine. Daily direct flights (Sydney/Melbourne/Brisbane)
- Mirage Whitsundays is just a **3 minutes** drive from **Airlie Beach main street**, **5 minutes** by car to **Port of Airlie**. You can walk to Abell Point Marina from the resort, private access, using the picturesque bicentennial board walk.
- Only a few minutes walking distance away from the resort to **Coles (just 800 meters away)**. Complimentary transfer service into the CBD and Coles supermarket are offered daily.
- All airport transfer to/from the Airport, as well as Taxis and Bicycle hire arranged by Reception .







# *Resort Description*

- Resort covers an area of over 10,000 m<sup>2</sup>
- One, two or three-bedroom self-contained apartments as well as villas and penthouses are on offer from 175m<sup>2</sup> to 450m<sup>2</sup>
- 64 amazing units and 24 additional apartments to come on board soon
- 2 swimming pools (Adult only & kids zones with outdoor spa), Gym, Day Spa, Mira restaurants and coming soon a Pool Bar!



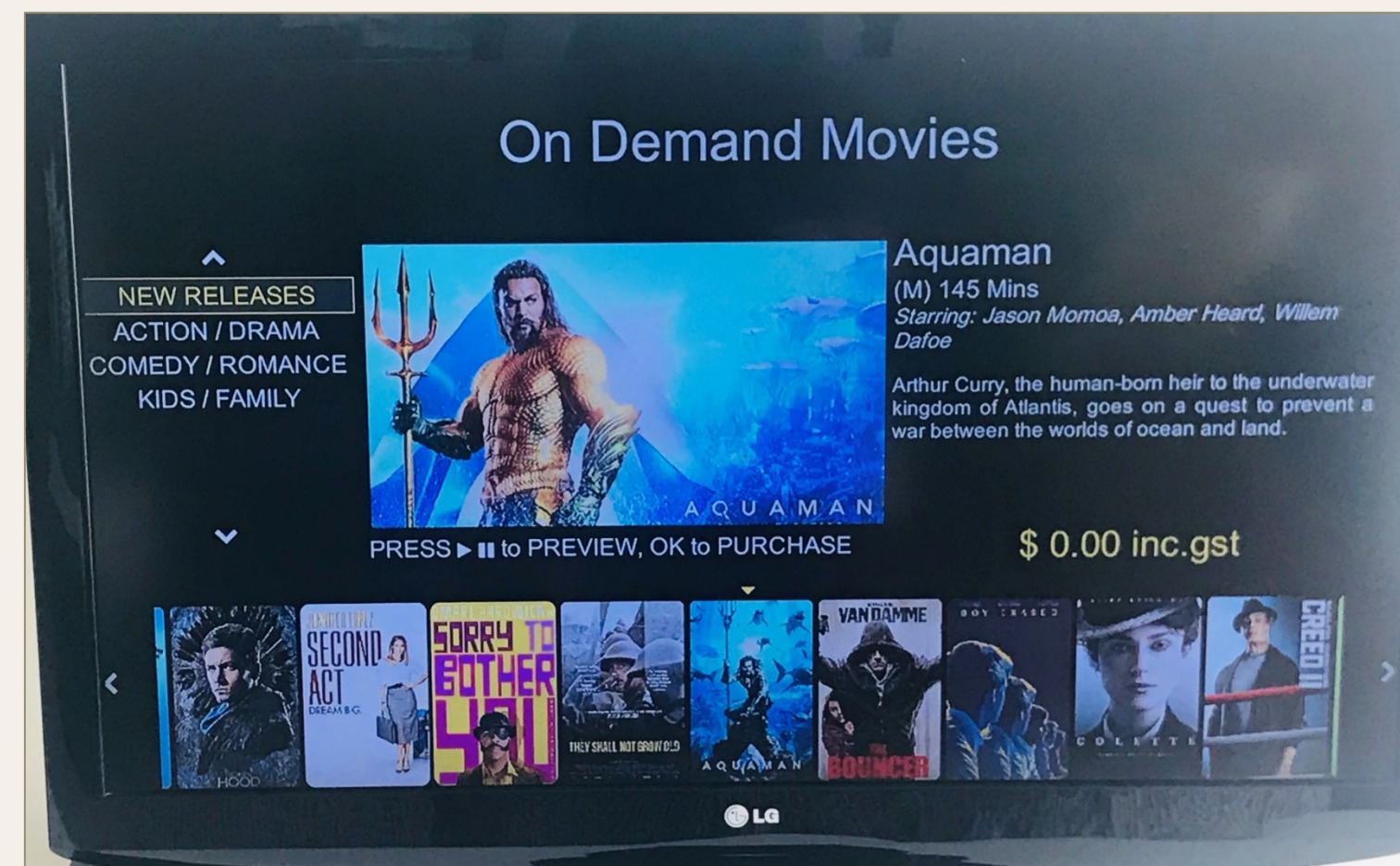


# Room Facilities



- Modern Kitchen Fitted With Stainless Steel Miele Appliances

- Washing Machine & Dryer



- L'Occitane en Provence toiletries
- Private Terrace
- Safe

- Free Movie
- Tea Coffee
- Iron

- Pool Towel
- Umbrella
- Hair Dryer



# Apartments

## Mirage Apartments

Features :

- Direct pool access
- Generous Living Areas
- 1/2/3 bedroom options, maximum 6 guests (and an infant)





# Apartments

## Deluxe Apartments

Features :

- Upper floor , ocean views
- Spacious Living Areas  
(perfect for entertaining)
- 1/2/3 bedroom options,  
maximum 6 guests (and  
an infant)

<https://my.matterport.com/show/?m=ZqwpRsLgUAb>





# Apartments

## Executive Apartment

Our most exclusive:

- Ocean views
- Private plunge pool ,  
with either waterfront or high  
elevation locations
- 1/2/3 bedroom options







**2 Story waterfront Villas**

**Spacious 3 bedrooms 3 bathrooms  
Direct WATERFRONT with AMAZING views with private plunge pool  
Ensuite Spa Bath in master bedroom  
The ultimate HOME AWAY FROM HOME**







## 3 Story Villa

3 Bedrooms and 3 bathrooms  
Spectacular 180 views - elevated private plunge pool  
Spa Bath outdoor shower – Master bedroom top floor with study  
Outdoor living on 3 levels, garden zone

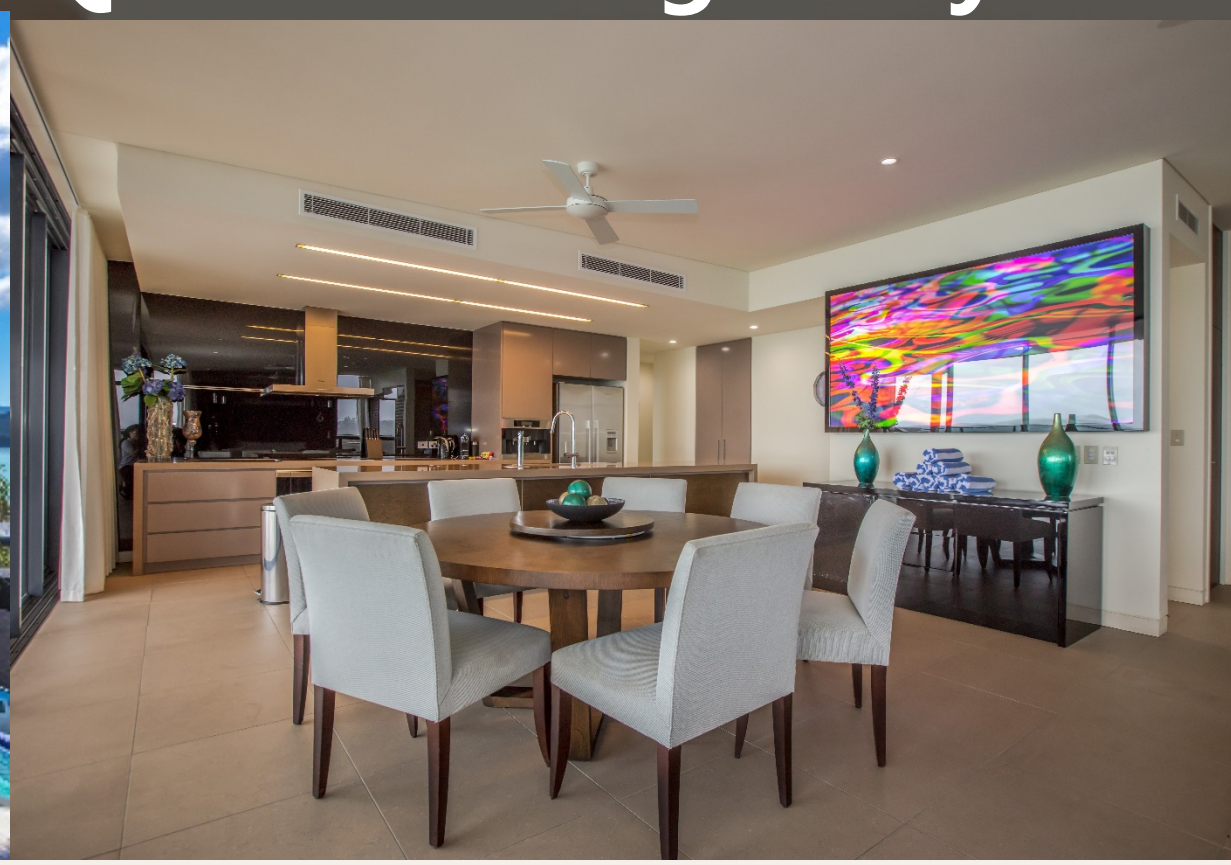






## Penthouse

**450 m2 4 Bedrooms and 4 Bathroom and a powder room**  
**10m Private Lap Pool on the top floor**  
**Magical never ending Ocean Views**  
**Double shower, spa bath - SPACE**  
**Alfresco BBQ and dining – day dreaming**





# Resort Categories



Units	Unit Type	Specific Room Type	Size	Bed Configuration
54	Apartments	Mirage Apartments – lead in (7) direct pool access	1/2/3 bedroom  Size 175m <sup>2</sup> - 250m <sup>2</sup>	1 Bedroom 1 bathroom (King Bed)
		Deluxe Apartments (39) Ocean views		2 Bedrooms 2 bathrooms ( King + Queen or 2 x Singles )
		Executive Apartments (8) Privat pool water front and elevated		3 Bedroom 2 bathroom ( King + Queen + 2 x Singles )
8	Villas	2 story waterfront villas (7)	330m <sup>2</sup>	3 Bedrooms 3 bathrooms ( King + Queen + 2 x Single )
		3 story villa (1)	400m <sup>2</sup>	
2	Penthouses	Executive Penthouses	450m <sup>2</sup>	4 Bedrooms & 4 bathrooms & powder room (2 x Kings + 1 x Queen + 2 x Singles )



# *Resort Facilities*



- Swimming pools
- Gymnasium
- Satori Day Spa
- Mira Restaurants
- Direct board access







# *Lagoon Pool*







# Horizon Pool

18+

*Adult Pool*











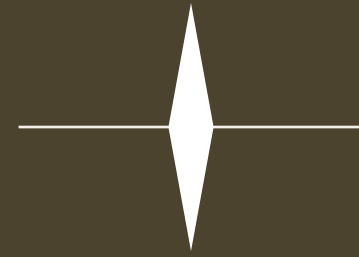
Satori Day Spa







## Day Spa



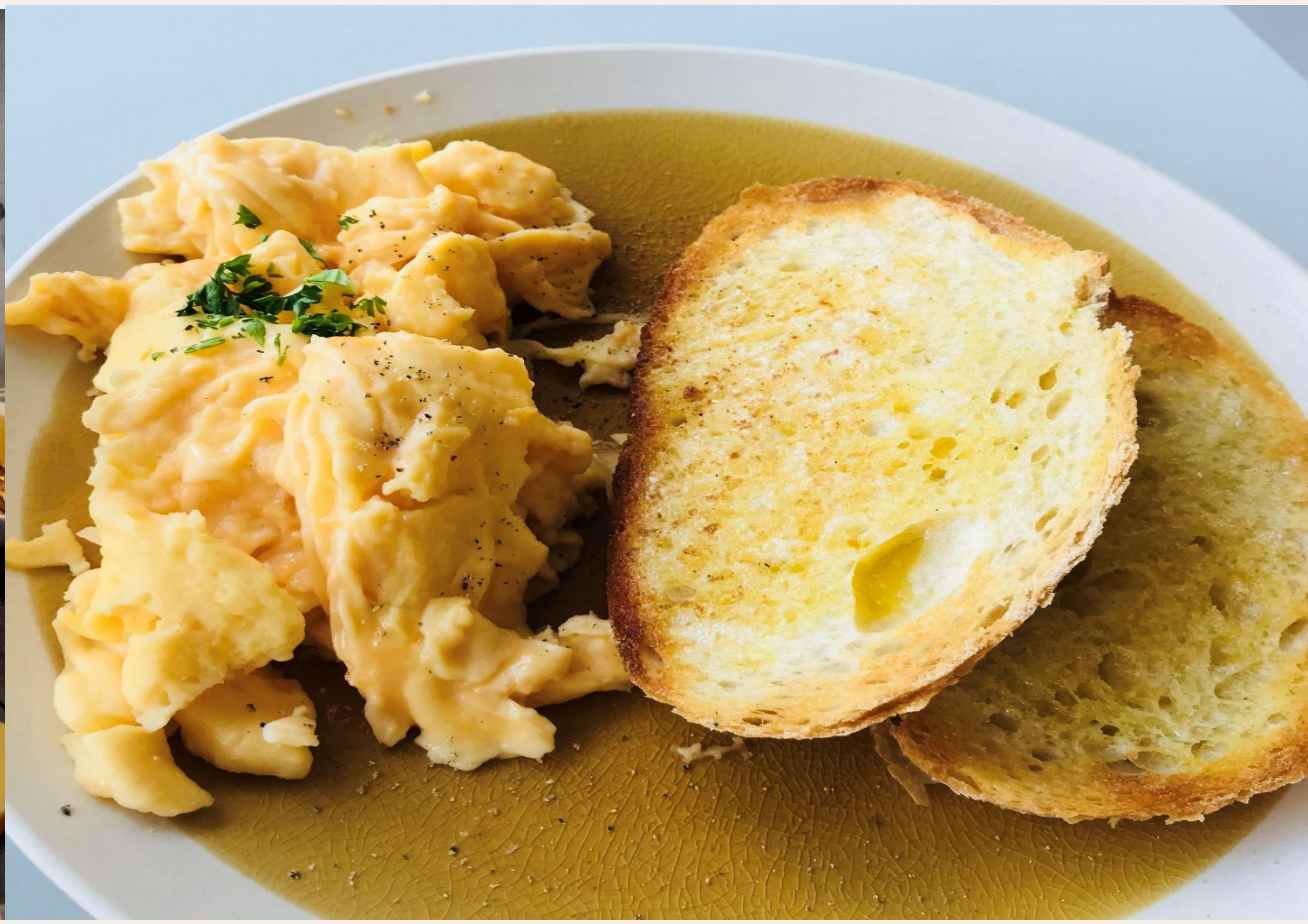
- Relaxation  
Massage
- Deep Tissue  
Massage
- Skin Facial





# Buffet Breakfast

6:30am-10:00am







*Restaurant*



“Ambrosia means ‘the food of the Gods’, and our chefs have certainly worked hard to create a menu that would embrace this meaning as well as provide guests a delightful culinary journey.

resort will now offer breakfast and dinner dining options to guests and the public.



# Resort Service



Airport Transfer (Extra Charge)



With Complimentary Buggy Transfer to Room



Daily complimentary Shuttle to Airlie Beach & Coles



Tour Desk & Gift Shop



# Resort Services

## Customization



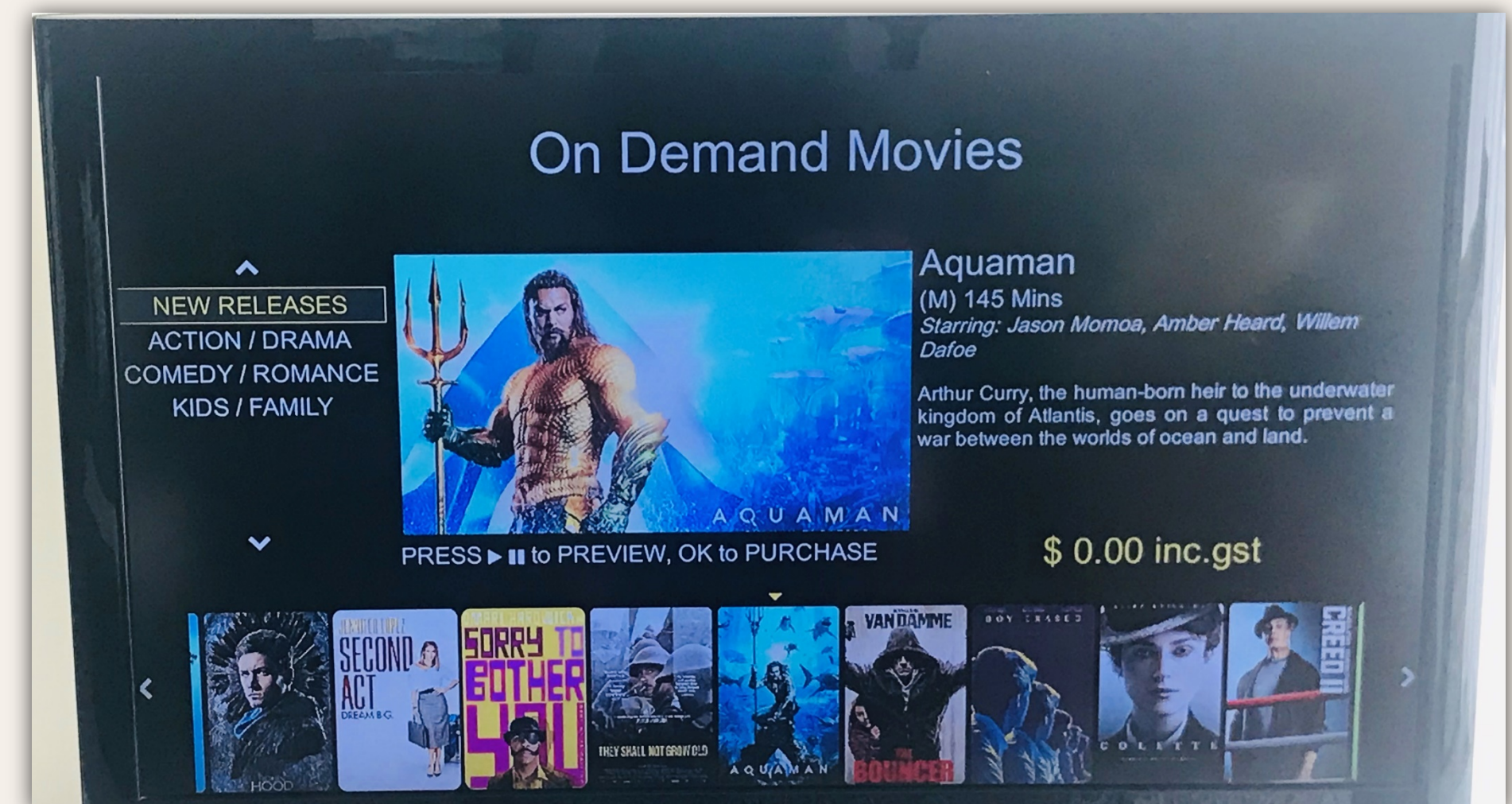
Honeymoon Decoration



Champagne, Chocolate, Card, Balloon Decoration



Free Secure Onsite Parking



Free Wifi



# Booking Methods

Booking Methods



Check availability/make a booking can sent email to  
**reservations@miragewhitsundays.com.au** or dial 07 4948 1940.

Visit our website <http://www.miragewhitsundays.com.au>

Search

GDS/IDS	Chain Code	Property Code
Amadeus (1A)	GD ▼	WSYMW
Sabre (AA)	GD ▼	439930
Galileo/Apollo (UA)	GD ▼	F2584
Worldspan (1P)	GD ▼	PPPMW





*Your Fun Starts Here*



MIRAGE  
WHITSUNDAYS

*Award Winning Resort*







# MIRAGE

W H I T S U N D A Y S

